

TS11 FLANGE STYLE REACTION TORQUE TRANSDUCER (U.S. & METRIC)

FEATURES & BENEFITS

- Capacities from 10 to 20K Nm (88.5 to 177K lbf-in)
- Compact
- Thru-hole design
- Threaded mounting holes

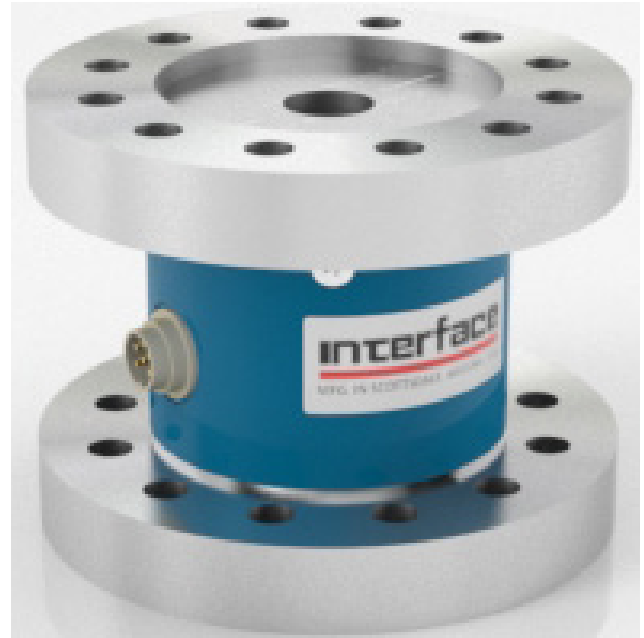
SPECIFICATIONS

ACCURACY – (MAX ERROR)		
Combined Error – %FS		± 0.1
Non-repeatability – %		± 0.02
TEMPERATURE		
Effect on Zero – %RO / °C		±0.02
Effect on Output – % / °C		±0.01
Rated Range	°C	-5 to +45
	°F	+23 to +113
Operating Range	°C	-15 to +55
	°F	+5 to +131
ELECTRICAL		
Output–mV/V	10 Nm	0.5
	88.5 lbf-in	
	25 - 20K Nm	1.0
	221 - 177K lbf-in	
Excitation Voltage – VDC MAX		12
Bridge Resistance – Ohm		350
Electrical Connection – pin		6
MECHANICAL		
Safe Overload – %RO		150
Safe Overhung Moment – %FS		50
Deflection at Capacity – rod		0.003
Material		Alloy Steel

OPTIONS

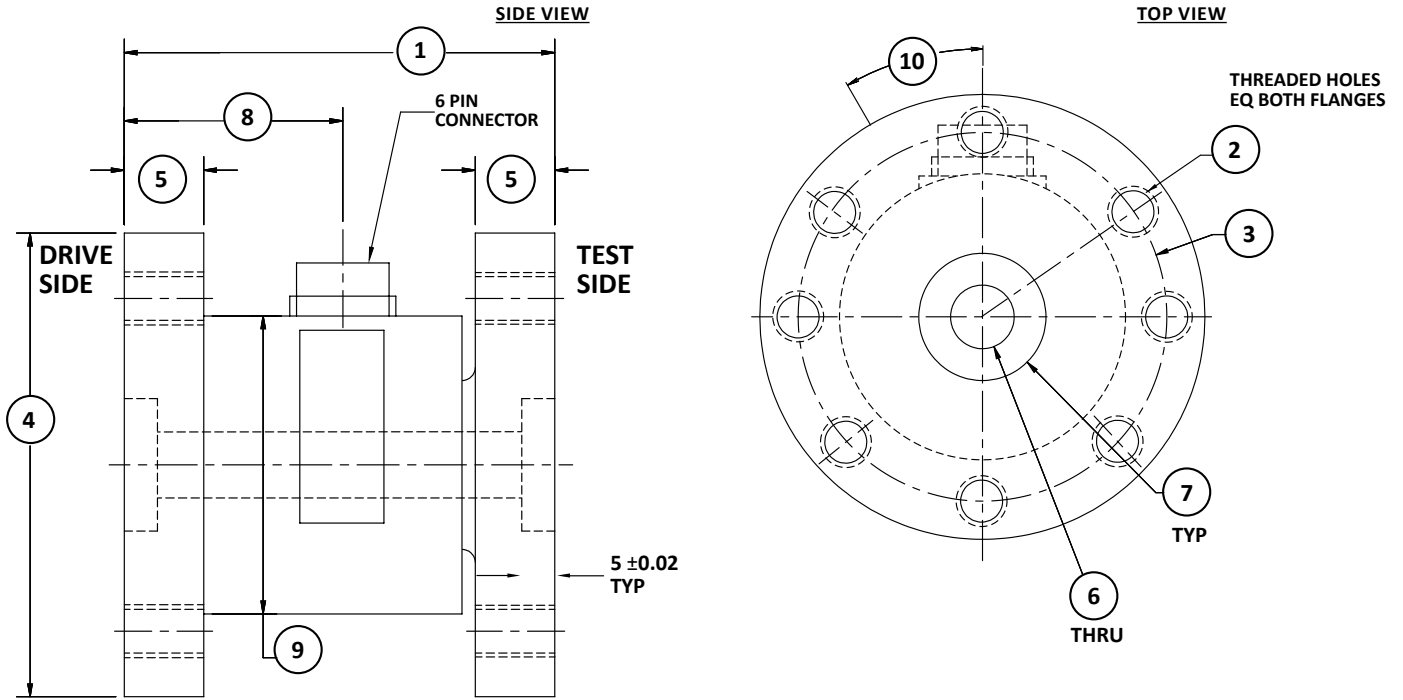
- 100 % control signal (internal shunt cal)
- High accuracy to 0.05% FS
- A2LA accredited calibration
- Mating cable (straight or right angle)
- Extended temperature range

STANDARD CONFIGURATION



Model TS11 (Shown)

TS11 FLANGE STYLE REACTION TORQUE TRANSDUCER (U.S. & METRIC)



DIMENSIONS

See Drawing	CAPACITY									
	Metric (Nm)	U.S. (lbf-in)	Metric (Nm)	U.S. (lbf-in)	Metric (Nm)	U.S. (lbf-in)	Metric (Nm)	U.S. (lbf-in)	Metric (Nm)	U.S. (lbf-in)
	10, 20, 50, 100, 200	88.5, 177, 443, 885, 1.77K	500, 1K	4.43K, 8.85K	2K	17K	5K	44.3K	10K, 20K	88.5K, 177K
	mm	in	mm	in	mm	in	mm	in	mm	in
1	65	2.56	80	3.15	100	3.94	100	3.94	124	4.88
2	M8, 6 places		M10, 8 places		M12, 12 places		M12, 12 places		M24, 8 places	
3	∅58	∅2.28	∅82	∅3.23	∅100	∅3.94	∅100	∅3.94	∅210	∅8.27
4	∅70	∅2.76	∅100	∅3.94	∅130	∅5.12	∅130	∅5.12	∅260	∅10.24
5	12	0.47	15	0.59	20	0.79	20	0.79	32	1.26
6	∅10	∅0.39	∅18	∅0.71	∅20	∅0.79	N/A	N/A	∅105	∅4.13
7	∅20 H7	∅0.7874/ 0.7866	∅20 H7	∅0.7874/ 0.7866	∅75 H7	∅2.9528/ 2.9516	∅75 H7	∅2.9528/ 2.9516	∅105 H7	∅4.1139/ 4.1325
8	33	1.30	39.5	1.56	45	1.77	45	1.77	67.5	2.66
9	∅45	∅1.77	∅60	∅2.36	∅80	∅3.15	∅80	∅3.15	∅145	∅5.71
10	60°		45°		30°		30°		45°	