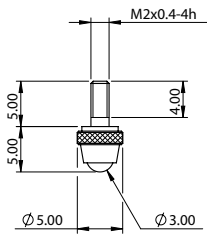
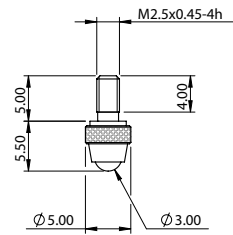


Transducer Tips



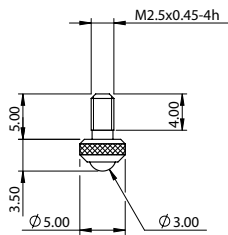
Ø3.00 mm Ball

| Tip Material | Part no. |
|-----------------|----------|
| T. Carbide | 806341 |
| Ruby | 807428 |
| Nylon | 807429 |
| Silicon Nitride | 807430 |



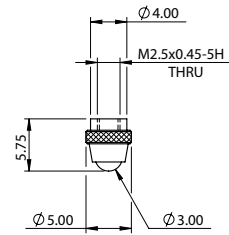
Ø3.00 mm Ball

| Tip Material | Part no. |
|-----------------|----------|
| T. Carbide | 804979 |
| Ruby | 804807 |
| Nylon | 805181 |
| Silicon Nitride | 804973 |



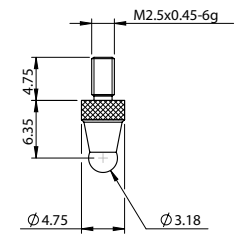
Ø3.00 mm Ball

| Tip Material | Part no. |
|-----------------|----------|
| T. Carbide | 802605 |
| Ruby | 807431 |
| Nylon | 803246 |
| Silicon Nitride | 807432 |



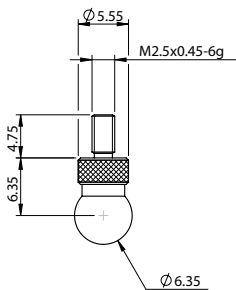
Ø3.00 mm Ball

| Tip Material | Part no. |
|-----------------|----------|
| T. Carbide | 804967 |
| Ruby | 804966 |
| Nylon | 804965 |
| Silicon Nitride | 805180 |



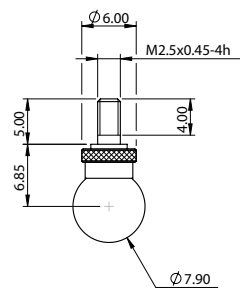
Ø3.18 mm Ball

| Tip Material | Part no. |
|--------------|------------|
| T. Carbide | 008305-004 |



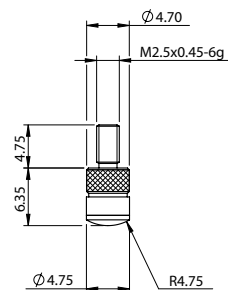
Ø6.35 mm Ball

| Tip Material | Part no. |
|--------------|------------|
| T. Carbide | 008305-005 |



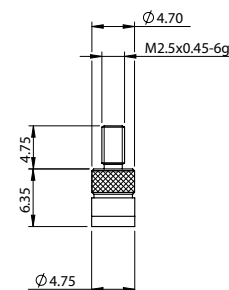
Ø7.9 mm Ball

| Tip Material | Part no. |
|--------------|----------|
| Ruby | 804828 |



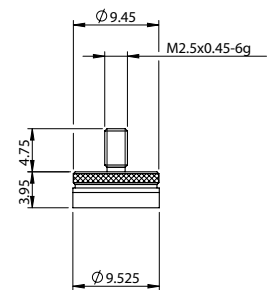
Ø4.75 mm Dome

| Tip Material | Part no. |
|--------------|------------|
| T. Carbide | 008305-034 |



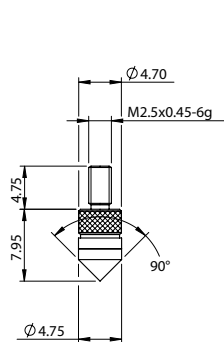
Ø4.75 mm Flat

| Tip Material | Part no. |
|--------------|------------|
| T. Carbide | 008305-033 |



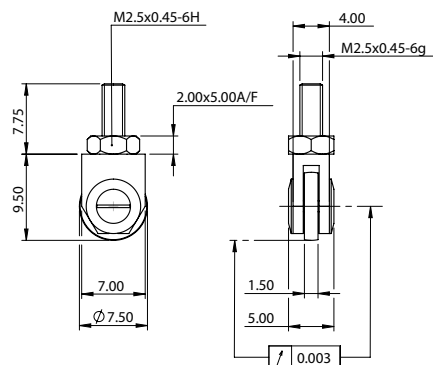
Ø9.52 mm Flat

| Tip Material | Part no. |
|--------------|------------|
| T. Carbide | 008305-007 |



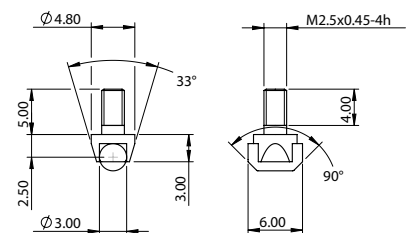
90° Sharp Point

| Tip Material | Part no. |
|--------------|------------|
| T. Carbide | 008305-003 |



1.5 x Ø7.5 mm Wheel

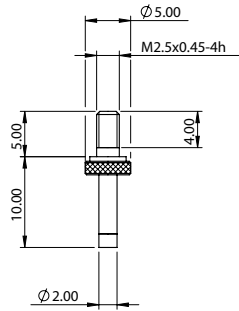
| Tip Material | Part no. |
|--------------|------------|
| Steel | 008305-027 |



Ø3.0 mm Roller

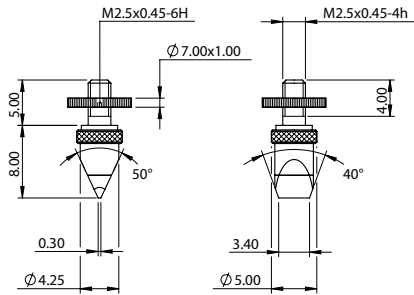
| Tip Material | Part no. |
|--------------|----------|
| T. Carbide | 209193 |

Transducer Tips



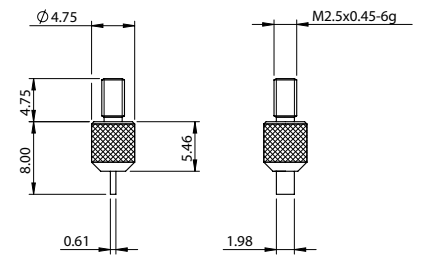
Ø2.0 mm Pin

| Tip Material | Part no. |
|--------------|----------|
| T. Carbide | 206675 |



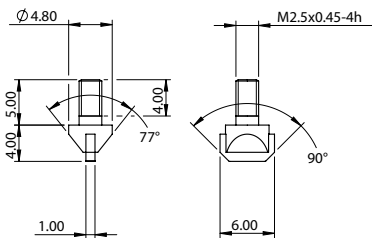
Knife Edge

| Tip Material | Part no. |
|--------------|----------|
| T. Carbide | 206674 |



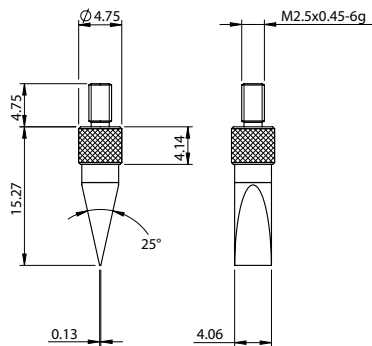
0.6 x 2 mm Blade Edge

| Tip Material | Part no. |
|--------------|------------|
| T. Carbide | 008305-035 |



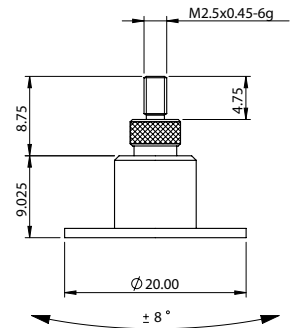
1 x 6 mm Blade Edge

| Tip Material | Part no. |
|--------------|----------|
| T. Carbide | 209194 |



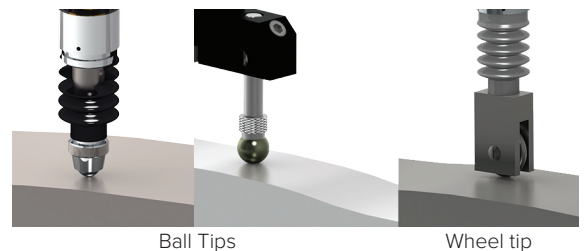
4 x 11 mm Knife Edge

| Tip Material | Part no. |
|--------------|------------|
| T. Carbide | 008305-036 |



Floating Tip

| Tip Material | Part no. |
|--------------|----------|
| Steel | 807434 |



Ball Tips

Wheel tip

Contact size, shape and material are critical to ensure accurate measurements, for example a flat or knife tip makes measuring external diameters much simpler than using a point tip as probe alignment is not as critical. Tungsten carbide is a good general purpose material while ruby offers longer life. Silicon Nitride is good for aluminium as tungsten carbide can mark aluminium parts.